
About SII Limited

Samitabh Infrastructure India Limited (SII Limited) is one of the most experienced and respected building and civil construction firms in , India. We have been transforming the ideas and visions of our clients into award-winning projects. We build with the intention of exceeding our client's expectations for safety, quality, functionality, and aesthetics, and deliver assets that stand the test of time. A full-service providing construction company serving in the Delhi NCR region. On time and on budget we can Deliver All Types of Construction and Renovation Projects like Construction, Interior Execution, MEP (Mechanical Electrical Plumbing), Maintenance, Firefighting, Turnkey Projects, General Contractors, Collaboration and Projects Management Consultancy.

Our Mission

We pride ourselves on being a local builder with national reach. Our employees are spread across offices and jobsites throughout the India. Though our presence today is larger than ever before, we are deeply rooted in the communities where we build and live.

Our portfolio features projects of all sizes and levels of complexity — from intricate interior renovations to some of the most complex civil operations in the country, we can build it all and we do. We ensure that meet our clients' needs every time, on every front.

But, more than our extensive portfolio, what truly sets us apart is our people. Their dedication to providing world-class service to our clients, resolve for delivering exceptional work, capacity for innovation and problem solving, and unwavering commitment to improving the communities we serve, make SII India what it is today. To provide quality workmanship and customer service and maintain the highest level of professionalism, honesty and fairness in our relationships with our customers, employees and vendors. To grow by continually providing useful and significant products, services, and solutions to markets we already serve – and to expand into new areas that build on our competencies and customer interests.



Our vision is to constantly improve the project delivery associated with us and we further look forward to helping our clients by the way of meeting their commercial goals through equipping and empowering our team.

Safety

SIIL India is committed to safety above all else. To us, no project is successful unless it is built safely. We believe that all accidents are preventable, and through proper planning and training, employee engagement and empowerment, and constant vigilance, we can ensure that everyone leaves the jobsite in the same condition that they arrived.

We follow all Safety rule like 'Never Drink & Drive', 'Always Wear Seat Belt', 'Keep a Safe Distance from the vehicle ahead', 'Always Avoid Distractions', 'Never Break Red Signal', and 'Always Drive within Speed Limit', 'Avoid the Drowsiness While Driving', 'Watch out for other Drivers on the Road.'



Our Services

We are engaged in undertaking Civil Construction Work for our valuable clients. These services are rendered by our team of experienced and qualified engineers. We use superior grade raw material and latest technology machines while rendering these services. Our quality controllers supervise the entire process in order to ensure that there is no scope for defects. We offer this service using high-grade tools & tackles and other raw material to construct various buildings as per the set industry standards. Moreover, we provide these services as per the specifications provided by the clients.

We render services for various kinds of Industrial Civil Work Service jobs. We have trained consultants and licensed contractors who have in-depth knowledge in this field and undertake industrial and commercial civil work projects. Clients highly acclaim our service and can avail the offered service at cost-effective prices.

We offer construction of modern buildings, Excavation, Drainage, Foundation Work, Parking areas, celebration & event halls and others.

EARTH WORKS

Earthworks are engineering works created through the processing of parts of the earth's surface involving quantities of soil or unformed rock. Flattened and levelled construction site. Road roller in the background.

Construction work that includes soil excavation (extraction), transportation, and placing of the soil in a predetermined location. Works are created from earth by excavating the ground or by raising embankments from the ground (soil).



We specialize in offering Land Work Services, which caters to the various requirements of clients. Our company has own heavy earth moving equipment and machinery that assist in offering quality services to our clients.

- ☞ Backfilling & Water cartage, Site Preparation / Land cleaning, Grading and erosion control,
- ☞ Environmentally responsible waste removal, Excavation in all type of strata

STRUCTURE

We specialize in offering Structure components of the highway are the road width, cross slope, pavement, road margins, traffic separators, and curbs etc.

Service which we provide in Components of Road Structure - Road Construction are following:

Road Margins – Are the parts of the ground at any side of the carriageway/road way of a road.

The several components comprised in the road edges/margins are frontage road, transit lane/parking lane, access road/drive way, bicycle path/cycle track, pathway/footpath, embankment slope as well as railings/guard rails.



Our Services

Pavement or carriage way Width - Carriage way is the roadway's width built for vehicular traffic's movement; Carriage way width relies/depends on in the traffic lane's width as well as number of lane needed.

Parking Lane – Those are offered in metropolitan roads to let kerb parking. Moreover, parallel parking must be permitted as long/far as possible. The parking lane width must be adequate.

Cycle Track – Those are offered in metropolitan regions wherein the cycle traffic volume on the road is quite significant/high.

Footpath - In metropolitan region wherein the pedestrian and vehicle/motor traffic are high, footpaths are offered to prevent accidents.

Guard Rails - Those are offered at the shoulder edge at the time the road is built on a fill with height greater than 3 m to avert the vehicle from moving/running of the path/track.

Shoulder - Those are the road way's part amid the carriage way's external peripheries/edges as well as uppermost/top surface peripheries/edges of embankment or interior peripheries/edges of the side drains in lowering/narrowing/cutting.

Side Slopes - Those are the slopes offered of the barricade/earth work's side of the thoroughfare/road in wall/embankment in lowering/narrowing/cutting for its integrity/durability; side slopes within/in the road are in such a way design in regard to maintain the earthwork robust in lowering/narrowing/cutting or in embankment.



AGGREGATE

Aggregate, is a broad category of coarse- to medium-grained particulate material used in construction, including sand, gravel, crushed stone, slag, recycled concrete and geosynthetic aggregates. Aggregates are the most mined materials in the world. Aggregates are a component of composite materials such as concrete and asphalt concrete; the aggregate serves as reinforcement to add strength to the overall composite material. Due to the relatively high hydraulic conductivity value as compared to most soils, aggregates are widely used in drainage applications such as foundation and French drains, septic drain fields, retaining wall drains, and roadside edge drains. Aggregates are also used as base material under foundations, roads, and railroads.

It contains stone aggregates of size 40mm, 20mm, 10mm, stone dust etc mixed well in standard proportion. It consists of clean, crushed, graded aggregates premixed with other granular materials and water and rolled to a dense mass on a prepared surface. The thickness is generally kept 250mm.



DRAINAGE

Drainage is the artificial removal of water, both surface and sub-surface. A method of conveying the removed water away from the pavement structure. At the least, this may consist of a base sloped towards a drainage ditch. At the most, this may consist of a pipe collector system. Surface drainage is the removal of excess water from the surface of the land.

There are different type of Drainage like Edge and Median drainage, Table drains and blocks, kerb and channel, Diversion drains and blocks, Pipe networks etc. We have all tools and skilled labour and done lots of work in Delhi NCR



Our Services

PLANTATION

To reduce the impact of air pollution and dust by planting trees and shrubs along the National Highways. They will act as natural sink for air pollutants and arrest soil erosion at the embankment slopes. Planting of trees in any particular area will depend on the soil suitability and climatic conditions.

Green Highways are not just about planting trees but a concept of enhancing environmental sustainability of highway investments and operations by enhancing the climate change mitigation (GHG emissions) and adaptation during construction, maintenance and operation of highways and road traffic. It has to include better focus on the engineering aspects right from design, to material usage, waste reduction, and recycling and reuse.

We have Completed Plantation Work in Delhi NCR in Apco and GR Infra.



TOE WALL

Toe walls are structures designed to restrain soil to a slope that it would not naturally keep to (typically a steep, near-vertical or vertical slope). They are used to bound soils between two different elevations often in areas of terrain possessing undesirable slopes or in areas where the landscape needs to be shaped severely and engineered for more specific purposes like hillside farming or roadway overpasses.

We have done several Toe Wall Projects in Delhi NCR through GR infra



WAY SIDE AMENITIES

The wayside amenities will provide rest and refreshment for highway commuters during their journey. There would be restaurant, food court, dhaba, fuel station, Hotel & Convention Centre, Banquet & Wedding Halls, Village Haat (Gram Bazaar), Local Craft Shops etc.

With the assistance of our adroit professionals, we provide Building Construction. These services are rendered by our professionals keeping in mind precise requirements of clients. In order to render these services, our skilled professionals use advanced techniques and best quality raw material. Our services are appreciated for timely execution and effective hassle free management.

We have done Building Work (Electric Panel, Hotel etc.) in Delhi NCR through GR infra



ROAD FURNITURE & SIGNS

The company has gain expertise in manufacturing high quality Road Furniture & Signs. These road signs are used in large scale for giving directions on the road, in order to control the traffic and for providing information about the area. We have expert professionals, who design variety of signs as per the specification and demand of the clients. It is also due to the hi-tech machinery and advance tools that specific requirement of the customer is fulfilled.

Using assured quality and optimum raw material & these signs are at par with the IRC and also as per the customers demand. Our range has been designed in a way that users can see it from the far off distance easily. The latest tools and equipment has helped us in meeting the desired.

Our Services

HIGHWAY SIGNAGES

These highway signages are made using premium quality material like fibre, steels or other raw material. On the highway roads these signage's are used for various needs such as for directions. We offer this range after strict speculation and check by the expert quality controllers of the organization. The raw material are procured from the reliable vendor base of the market and provide them at market leading prices. Salient features are:

- ☑ Highly durable
- ☑ Weather resistive

RANGE OF ROAD FURNITURE & SIGNS

- ☑ Green & White Highway Toll Plaza Sign Board
- ☑ Gantry Sign Board
- ☑ Solar Power Speed Breaker Sign Board
- ☑ Highway Sign Boards
- ☑ White & Red Equilateral Triangle Highway Sign Boards
- ☑ Retro Reflective Highway Sign Boards
- ☑ Asper IRC HIP Sign Boards
- ☑ Yellow, Black Metal Highway Signs, For Road Safety
- ☑ Warning Sign Boards



STREET LIGHT SERVICE

We are one of the well-established service providers of Street Lighting Service. The offered service comprises of the installation and erection of electrical poles, for laying lighting network. Our offered service is available at minimal price plan and rates. The offered service is carried out, by the industry experts of the trade. Our offered service is very Comprehensive, owing to the full coverage of pole installation and Cable Connection.



HIGHWAY ELECTRIFICATION

We are one of the well-established service providers of Street Lighting Service. The offered service comprises of the installation and erection of electrical poles, for laying lighting network. Our offered service is available at minimal price plan and rates. The offered service is carried out, by the Industry experts of the trade. Our offered service is very comprehensive, owing to the full coverage of pole installation and Cable Connection.

We have done Street Light and electrical poles installation in GR Infra and Apco Infra in Delhi NCR.



Our Services

WALL COMPOUND

We are counted amongst the top companies involved in offering an extensive range of Wall Boundary Wall. Best quality raw material is used for manufacturing these bolts that too after testing their quality under rigorous measures. These are used in various industries as well as in residential complexes and require less maintenance. Moreover, we also assure timely delivery of our products.

We have done Wall Compound work in GR Infra in Delhi NCR.

MAN POWER SUPPLY

We are provide skilled manpower, we offer our clients complete solution for Manpower Supply. Our organization is supported by skilled and experienced personnel, who enable us to meet the exact specification of clients. Apart from this, the strong technical background of our personnel helps us to meet the maximum client satisfaction. We ensure our clients for timely execution and quality based services.



- ✓✓ Engineer
- ✓✓ Welder
- ✓✓ Driver
- ✓✓ Helper
- ✓✓ Technical Staff
- ✓✓ Foreman
- ✓✓ Gardner
- ✓✓ Other Skilled & Rigger
- ✓✓ Machine Operators
- ✓✓ Watchman
- ✓✓ Unskilled workers



STEEL STRUCTURAL WORK

Scrap consists of recyclable materials left over from product manufacturing and consumption, such as parts of Road, building supplies, and surplus materials like TMT, M.S. Sheet & Bucket, Plain G.I. Sheet, CGI G.I. Sheet. We have Purchased Scarp from GR INFRA and APCO in DELHI NCR.



PCC/RCC WORK

We provide skilled manpower, offer our clients complete solution for Manpower Supply. Our organization is supported by skilled and experienced personnel, who enable us to meet the exact specification of clients. Apart from this, the strong technical background of our personnel helps us to meet the maximum client satisfaction. We ensure our clients for timely execution and quality based services.



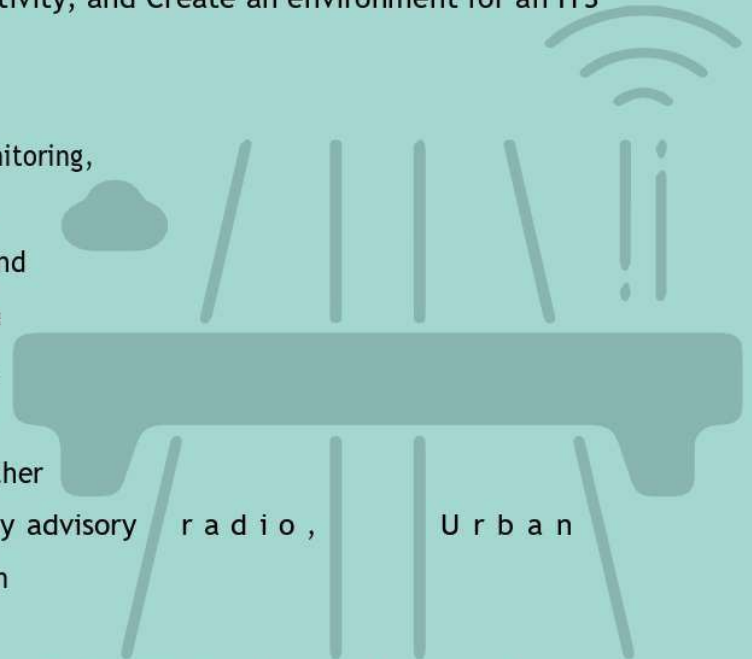
We have made Cycle Track, Footpath, PCC Kerb on Cycle Track including Shuttering, Curing, Finishing, Preparation and making of surface for footpath and cycle with GSB bedding including Spreading, leveling and dressing and compaction of GSB bed for Paver block, Tiling work and colour concrete , and Building work in Apco and GR infra in Delhi NCR

Our Services

Advance Traffic Management System (ATMS)

The ATMS integrates technology primarily to improve the flow of vehicle traffic and improve safety. Real-time traffic data from cameras, speed sensors, etc. with the help of ATMs we can Increase transportation system efficiency, Enhance mobility, Improve safety, Reduce fuel consumption and environmental cost, Increase economic productivity, and Create an environment for an ITS market.

The Functional Area of ATMs is Real-time traffic monitoring, Dynamic message sign monitoring and control, Incident monitoring, Traffic camera monitoring and control, Active Traffic Management (ATM), Chain control, Ramp meter monitoring and control , Arterial management, Traffic signal monitoring and control, Automated warning systems, Road Weather Information System (RWIS) monitoring, Highway advisory Traffic Management and Control, Traffic optimization



We provide ATMs Equipments and Services like ; Traffic Monitor Camera System, Video Incident Detection System, Central Processing System, Variable Message Sign System, Digital Transmission System , GIS Map, Probe Data System, Network Management System, Video Management Software, Graphics Display, Speed Detection System, Facility Monitoring System, Power Supply work, Adaptive Traffic Signal Control System, Red Light Violation Detection System, TMC & Sub-Centre works, Access Control System, O&M work of ATMS, Advance Driver Advisory System.

For Solution of ATMS components we have

Computing – Workstations, Servers and storage, **Network** – Router and switches, Graphics Display, its Controller and Software, Surveillance & Access Control – Cameras, VRS, Video Analytics / Management Software, Box Camera Housing etc., **Security** – Firewalls and any other security solution, Interior works and technical furniture at control centers.

Utility Shifting

Utility Shifting is process of getting estimations of all the affected utilities along the project site from the concerning departments. Further consequent upon approval of estimate for shifting of different Utilities the award of work by the authority the Concessionaire is given to start the shifting activity except at sections of land under acquisition.

STP Pole, XLPE Cable, Cable Jointing Kit Suitable, TOP Channel, Dropper Channel, Earthing set complete, Nut & Bolt off Size, ACSR weasel conductor, GI Pipe, Pin Insulator, Disc Insulator with Fitting, Fuse set, Holding Clamp, T-off Channel, stay Set complete, TPMO, Concreting of pole, Substation Base Channel.

Metal Beam Crash Barrier

Metal Crash Barriers are very effective road safety systems which help in protecting vehicles and the passengers in case of an accident and also serve as a good visual guide for drivers, especially in the night.



We have done MBCB work in Apco Infra in Aligarh -Kanpur Package-III Section of NH-91.

Stone Pitching

Stone pitching is used on steep slopes for upland paths. This technique involves large interlocking of stones, with their flattest side up to create small irregular steps that blend into the landscape.



We have done Stone Pitching work in Apco Infra in Aligarh -Kanpur Package-III Section of NH-91.

+ + + + + +

Our Services

PVC PIPE

A rainwater downpipe is a pipe that is used to direct rainwater away from a road, typically from roof guttering to a drainage system. We have skilled plumber and equipment.

We have fixed PVC down corner pipe in wall & VUP in Apco and GR infra in Delhi NCR

PAINTING / GRINDING

We are engaged in the provision of high quality Road Painting and Grinding Work. This work is done by painting professionals by making use of premium quality raw materials. The painting work is done to ensure that the safety markings on the road are all present in order to allow smoother movement of people and traffic. The painting work provided by us is highly affordable.

We have done Grinding and Cleaning of Concrete Surface Like. Box Culvert VUP LVUP Including Labour, Electrical and Tools & Tackles etc. in Apco in Delhi NCR

Intelligent Transportation Technologies

Advanced Traffic Management System (ATMS)

Radar Detection

Computational Technologies

Goals and Metrics for ITS

HIGHWAY EMPLOYEE MESS

We have also provide food service at a remote site on-premises and off- premises for Highway Worker. We have good and skilled people. We prepare and serve food items to clients hosting parties, meetings and events.

We have provided off- premises food in GR Infra in Delhi NCR.

We have done Grinding and Cleaning of Concrete Surface Like. Box Culvert VUP LVUP Including Labour, Electrical and Tools & Tackles etc. in Apco in Delhi NCR

SCRAP

Scrap consists of recyclable materials left over from product manufacturing and consumption, such as parts of Road, building supplies, and surplus materials like TMT, M.S. Sheet & Bucket, Plain G.I. Sheet, CGI G.I. Sheet..

We have Purchased Scarp from GR INFRA and APCO in DELHI NCR.

Wireless Communications

Video vehicle detection

Vehicle re-identification

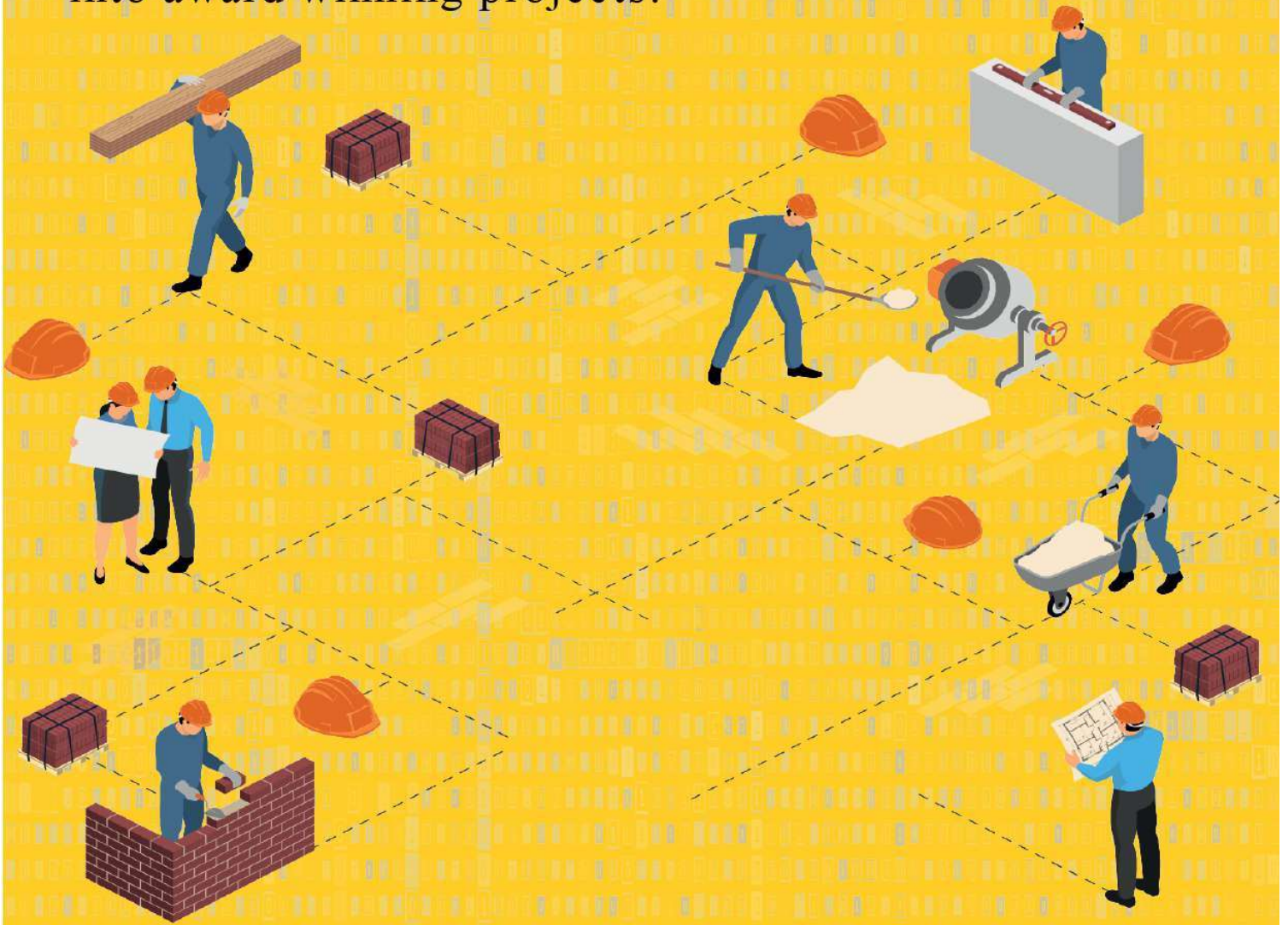
Bluetooth detection

Smartphone-based rich monitoring

GPS based methods

Sensing

SIIL Limited is one of the most experienced and respected building and civil construction firm. We have been transforming the ideas and visions of our clients into award winning projects.



CONTACT

+91 9572798555

+91 9931007448

Email Id : siillimited@gmail.com



Corporate Office :-

Samitabh infrastructure India Limited [SIIL Limited]
karan Tower, main Palam Dabri Road, Mahavir
Enclave, South west Delhi, Delhi - 110045
India

